



CONVEYOR CHAIN USE AUTOMATIC LUBRICATOR

TCL
LUBRICATOR

TCL
LUBRICATOR

TCL
LUBRICATOR

TCL
LUBRICATOR

TCL
LUBRICATOR

TCL
LUBRICATOR

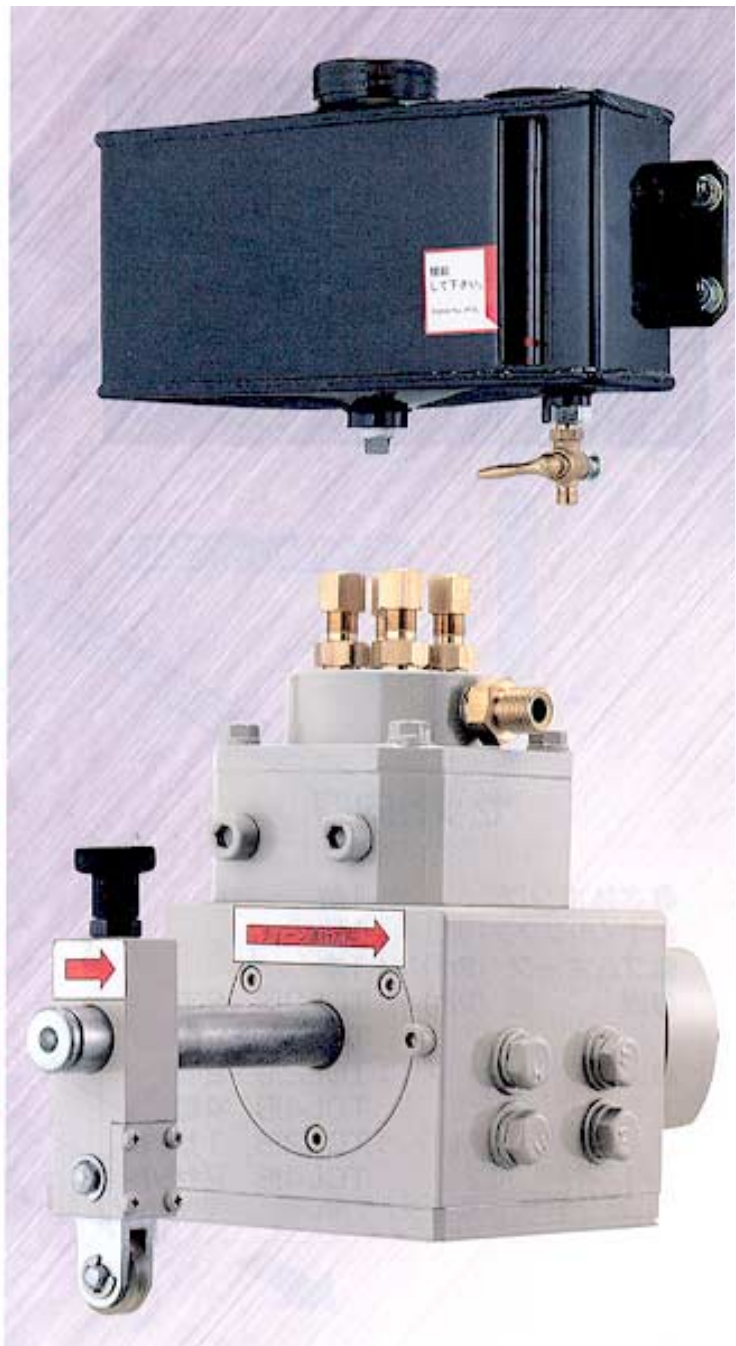
TCL
LUBRICATOR

TCL
LUBRICATOR

TCL
LUBRICATOR

TCL
LUBRICATOR

TCL
LUBRICATOR



CONVEYOR CHAIN USE AUTOMATIC LUBRICATOR

No external power necessary

As the chain movement drives the lubricator, electrical or hydraulic power is not required allowing easy set up and maintenance.

Accurate lubrication

As lubrication is performed through chain movement and operation, precise and consistent lubrication is possible.

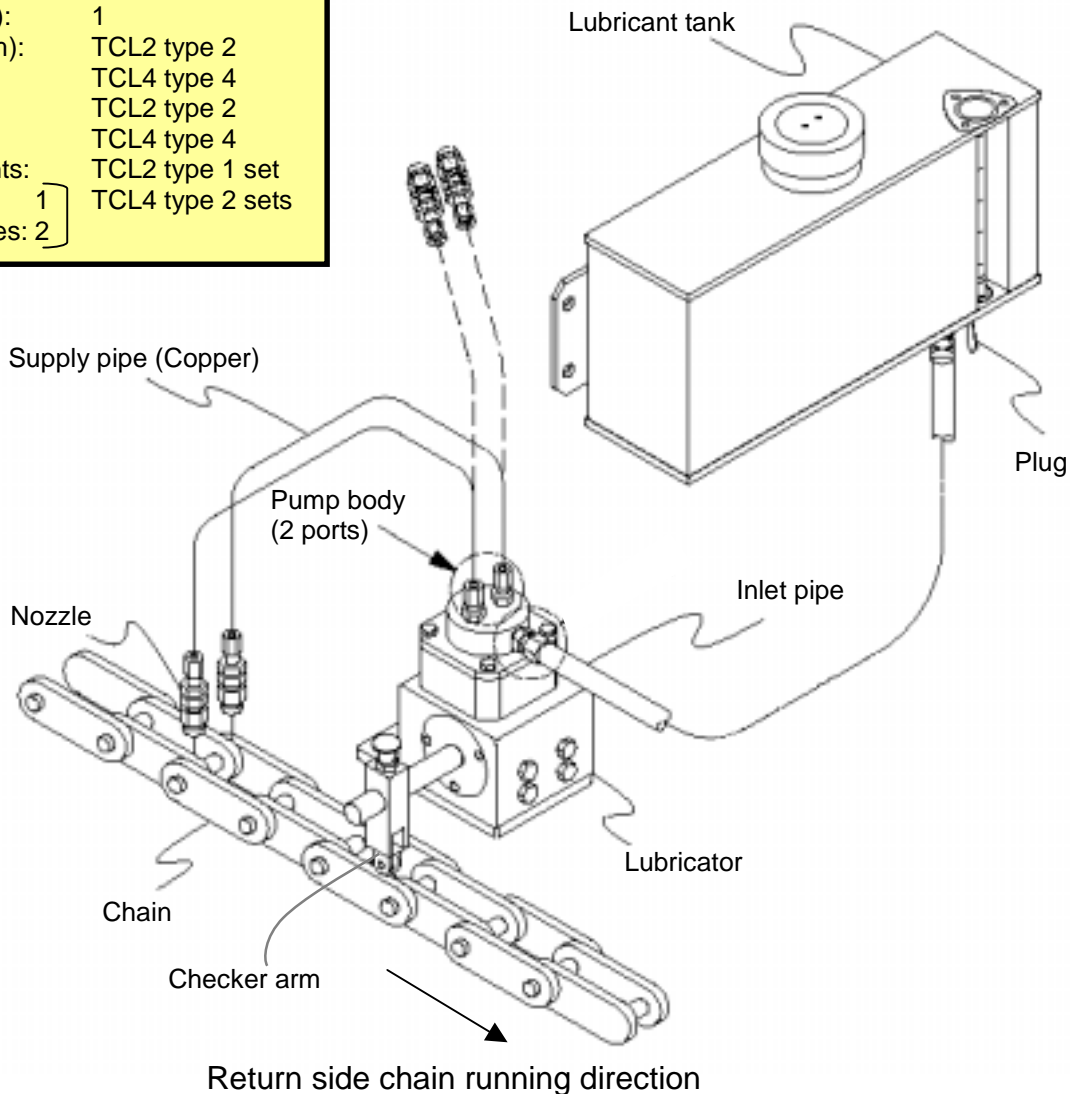
Compact and low cost

Compared with existing conveyor use lubricators it is lightweight, easy to install and economically priced.

The **AUTOMATIC LUBRICATOR** reduces Conveyor Chain wear, running resistance and running noise.

Parts

Pump body:	1
Lubricant tank (5l):	1
Rubber hose (2m):	1
Copper piping (2m):	TCL2 type 2 TCL4 type 4
Nozzle	TCL2 type 2 TCL4 type 4
Nozzle attachments:	TCL2 type 1 set TCL4 type 2 sets
L-shaped plate:	1
Attachment plates:	2



TCL type Conveyor chain use Automatic Lubricator

The TCL type Lubricator is for application with Conveyor chains. The lubricator is automatically activated by the chain roller pushing the pump's checker arm up to release the set amount of lubricant through the nozzle. Accordingly, external power for the pump is unnecessary, set up is simple and, precise and reliable lubrication is possible.

Parts functions

Part	TCL4	TCL2
Supply ports	4	2
Allowable operation	Max. 3 times/second Allowable chain pitch and chain speed data is shown below	
Supply amount	Fixed 0.05CC/shot/port	
Timing sensor	Checker arm	
Operation/Stopping	When the conveyor has been stopped, the checker arm can be moved manually.	
Oil tank	5l	
Operating Temperature	-10°C ~ +120°C	

Allowable operation chain pitch and speed

Chain speed (m/min) \ Chain pitch (mm)	5	10	15	20	25	30
75	O	X	X	X	X	X
100	O	O	*S	X	X	X
150	O	O	O	O	O	*S
200	O	O	O	O	O	*S
250~600	O	O	O	O	O	O

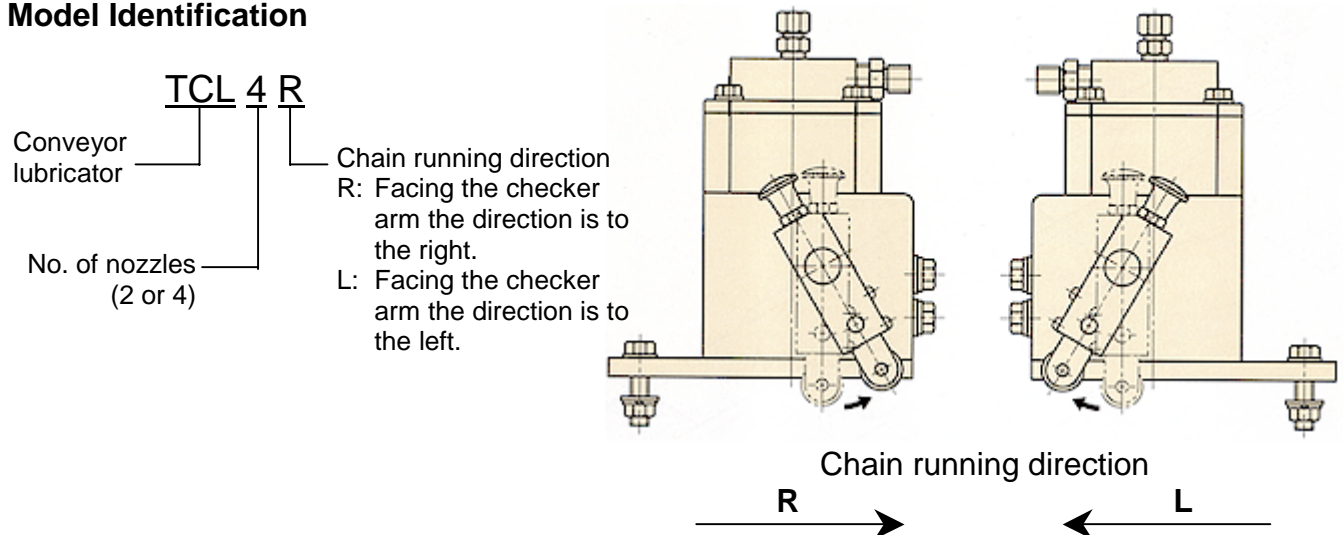
*S: Only S roller type can be used.

Lubricant

Lubrication oil with a viscosity index of ISO VG32 ~ 100 can be used.

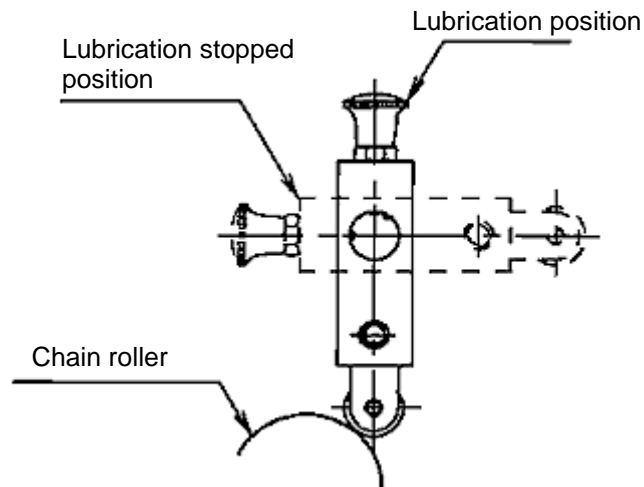
Note: Lubricants containing additives such as MoS₂ (Disulfide) cannot be used as they may obstruct the nozzle.

Model Identification



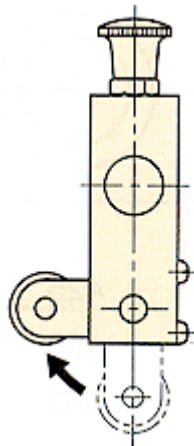
Stopping lubrication

To stop lubrication, first, after stopping the conveyor turn the checker arm 90° using the lever at the top until it locks into the fixing hole and cannot contact the chain. Turn off the pump.

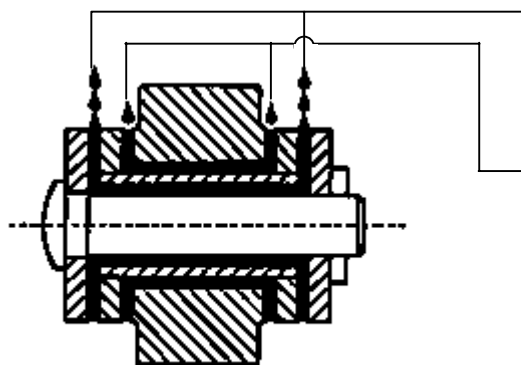


Safeguard for chain backlash

If the chain backlashes or reverses direction the checker arm's roller part will spring backwards and up to prevent catching on the chain.



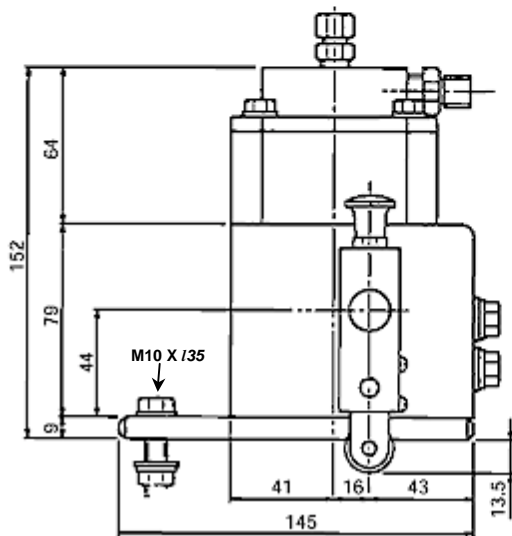
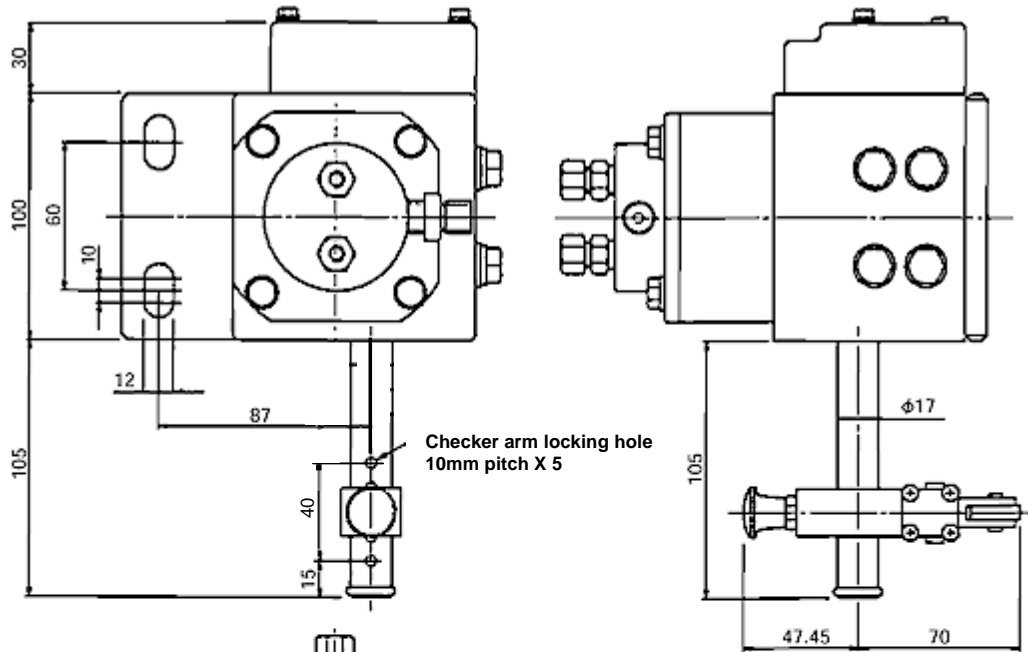
Lubrication



Lubricates between the Inner and outer plates (Lubrication for area between Pin and bushing)

Lubricates between the Inner plate and the roller (Lubrication for area between bushing and roller)

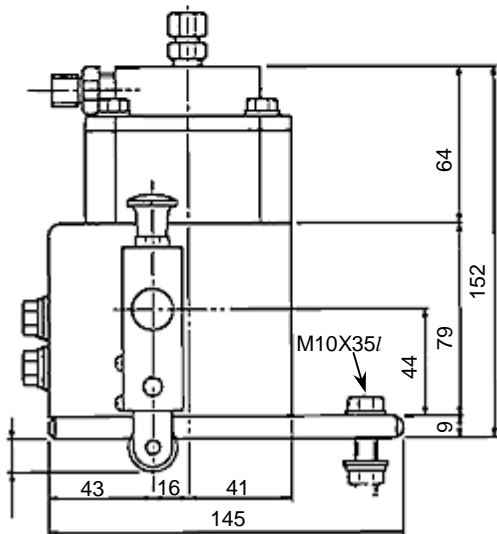
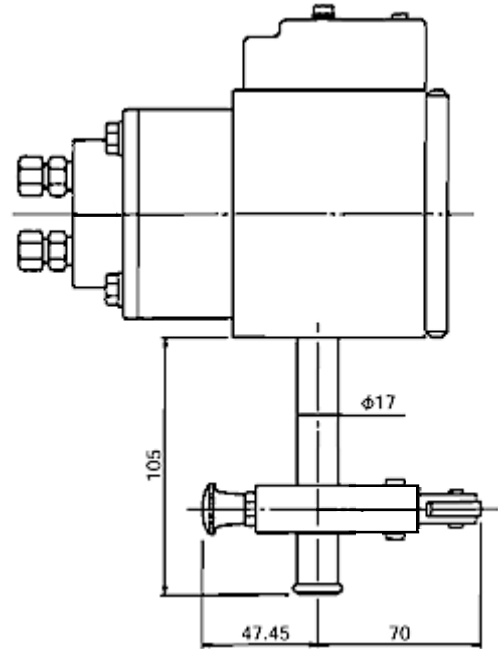
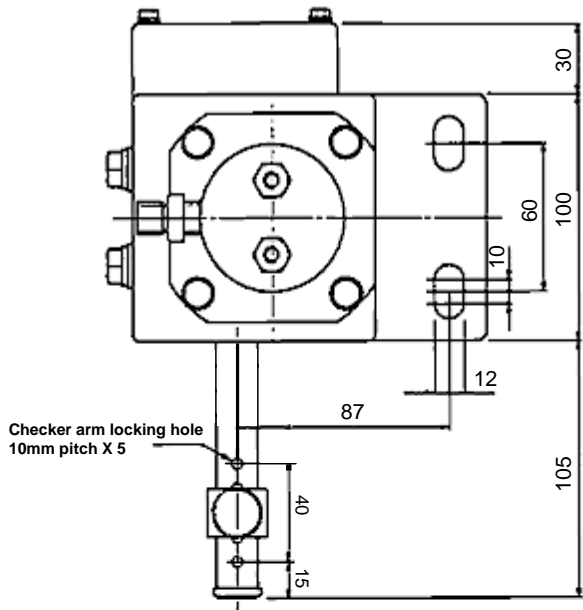
Main Pump TCL_R



Running direction → R

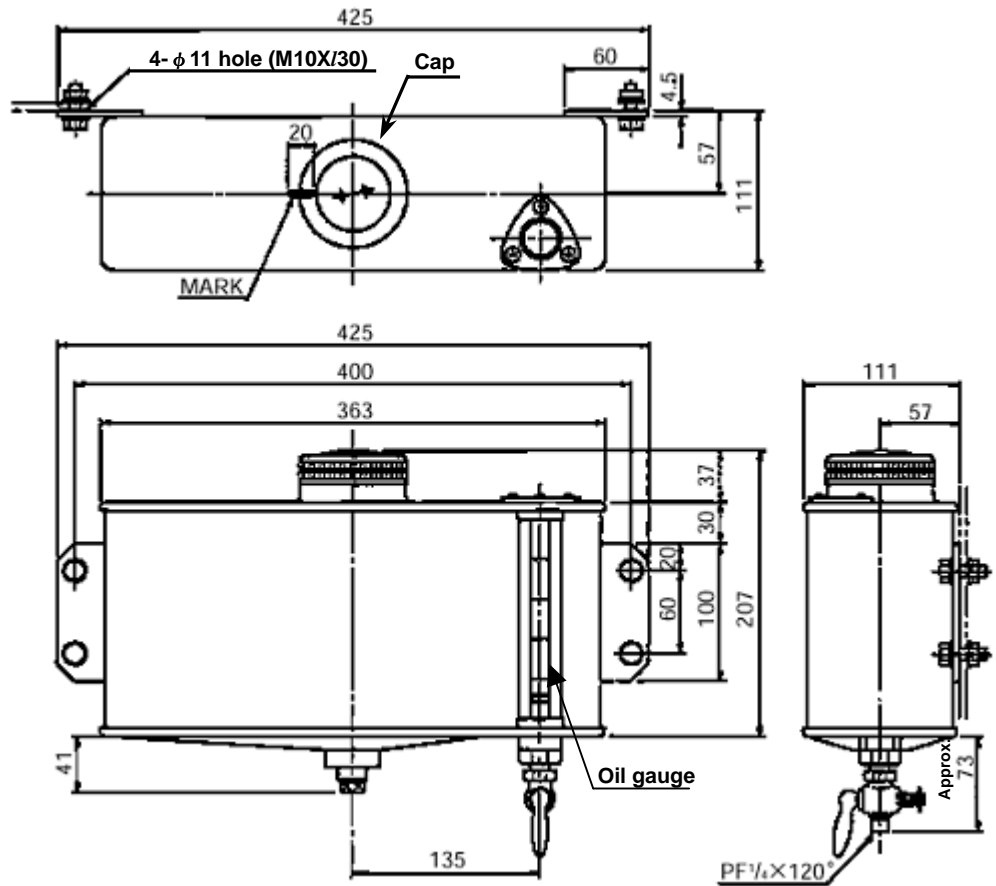
Type	TCL4R TCL4L	TCL2R TCL2L
Supply ports	4	2
Allowable operation	Max. 3 times/second	
Supply amount	Fixed 0.05CC/shot/port	
Supply pressure	2kg/cm ²	
Colour	Cream	
Weight	5.3kg	
Attachment parts	Bolts (M10X35/) Nuts X 2	

Main Pump TCL_L



L ← Running direction

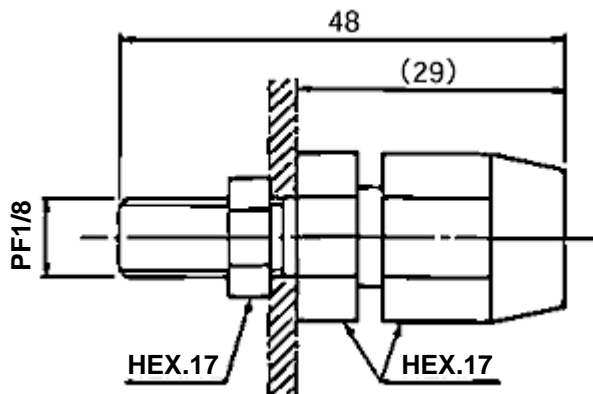
Oil Tank



Oil Tank

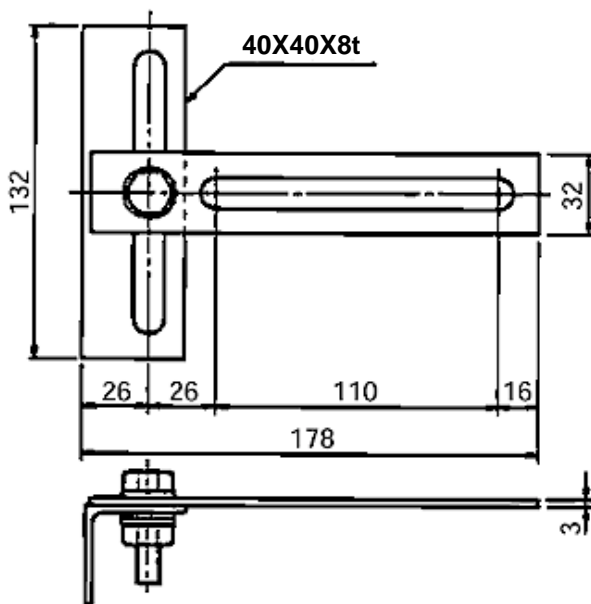
Size	5 l
Filter	Built-in 50 mesh
Tank colour	Dark green
Weight	5.3kg
Attachment parts	Bolts (M10X30) Nuts X 4

Nozzle

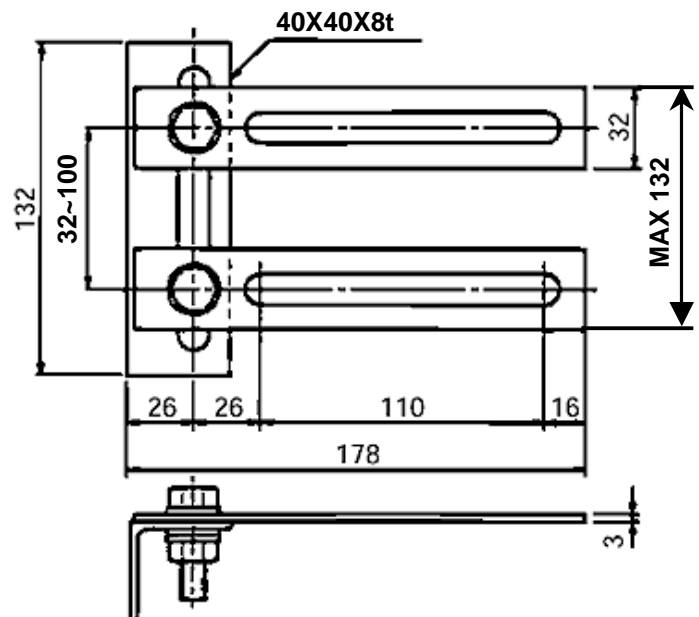


Nozzle attachment parts

When using one attachment plate



When using two attachment plates



Piping(Attachments nuts for each end)

Piping	Outlet pipe	Inlet pipe
Material	Copper	Rubber hose (Black)
Dimensions	Outer Dia. ϕ 5	Outer Dia. ϕ 16
	Inner Dia. ϕ 3	Inner Dia. ϕ 8.5
Length	2000	2000